



Interreg Greece-Bulgaria



EUROPEAN UNION

GR-BG BUSINESS PASSPORT

European Regional Development Fund

BUSINESS PASSPORT TOPOLOVGRAD



Interreg Greece-Bulgaria



Topolovgrad Municipality

GR-BG BUSINESS PASSPORT

European Regional Development Fund

At the beginning of 2022, the team of Regional Municipalities Association "Maritza" started the development of a Business Profile of Haskovo region as well as in 2023 its update. What the development should contain was a discussion for more than a month. And the reason for this was the lack of up-to-date information that would serve businesses in the region and beyond, for proper planning and definition of specific goals that would contribute to successful economic development in the region. By finding and summarizing the data in this Business Profile, we aim to show up-to-date information about the business climate, the local economy, the workforce, the fields of education and healthcare, etc. in Haskovo region by municipalities.

We hope this is useful for you and your business. We promise this is just the beginning. We are convinced that with joint efforts we can achieve good results, so please, if you have suggestions on how and with what to improve the current product, contact us via www.maritza.info

We are expecting you!

With wishes for fruitful cooperation,
The team of RMA "Maritza"

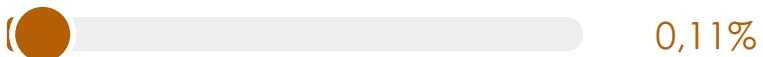
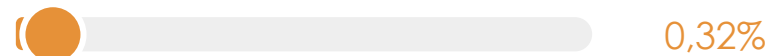
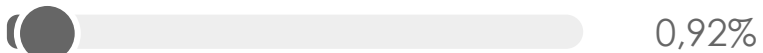
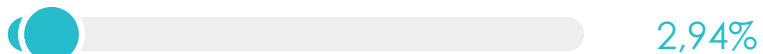
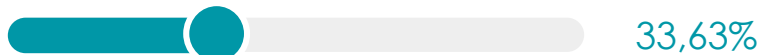


REGIONAL MUNICIPALITIES ASSOCIATION

MARITZA



Territory balance





Area, population density and settlements



Area

710,8
Sq. km



Population
density

12,8
P / sq. km



Settlements

21



Towns

1



Villages

20

**Topolovgrad
Municipality**

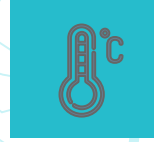


Atmospheric pressure, temperature and air humidity in 2021



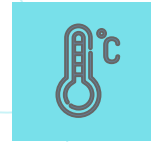
Atmospheric pressure

988,8
hPa



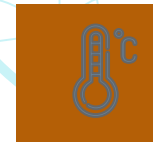
Air temperature:
Average

13,7
°C



Air temperature:
maximum absolute(02/08/2021)

42
°C



Air temperature:
minimum absolute (17/02/2021)

-13,6
°C



Relative air humidity - %

68
%

Meteorological station Haskovo



Precipitation in 2021, Haskovo Meteorological Station

Precipitation

annual amount

793
MM

Precipitation

Maximum
(27/01/2021)

45
MM

Number of
days with
precipitation ≥ 0.1
mm

128

Number of
days with
thunderstorms

25

Number of
days with
fog

32

Number of
days with
snow cover

16

Number of
days with
cloudiness < 2

56

Number of
days with
cloudiness > 8

108



Gender - age pyramid as of 31.12.2022

AGE

WOMEN

MEN



80+



60-79



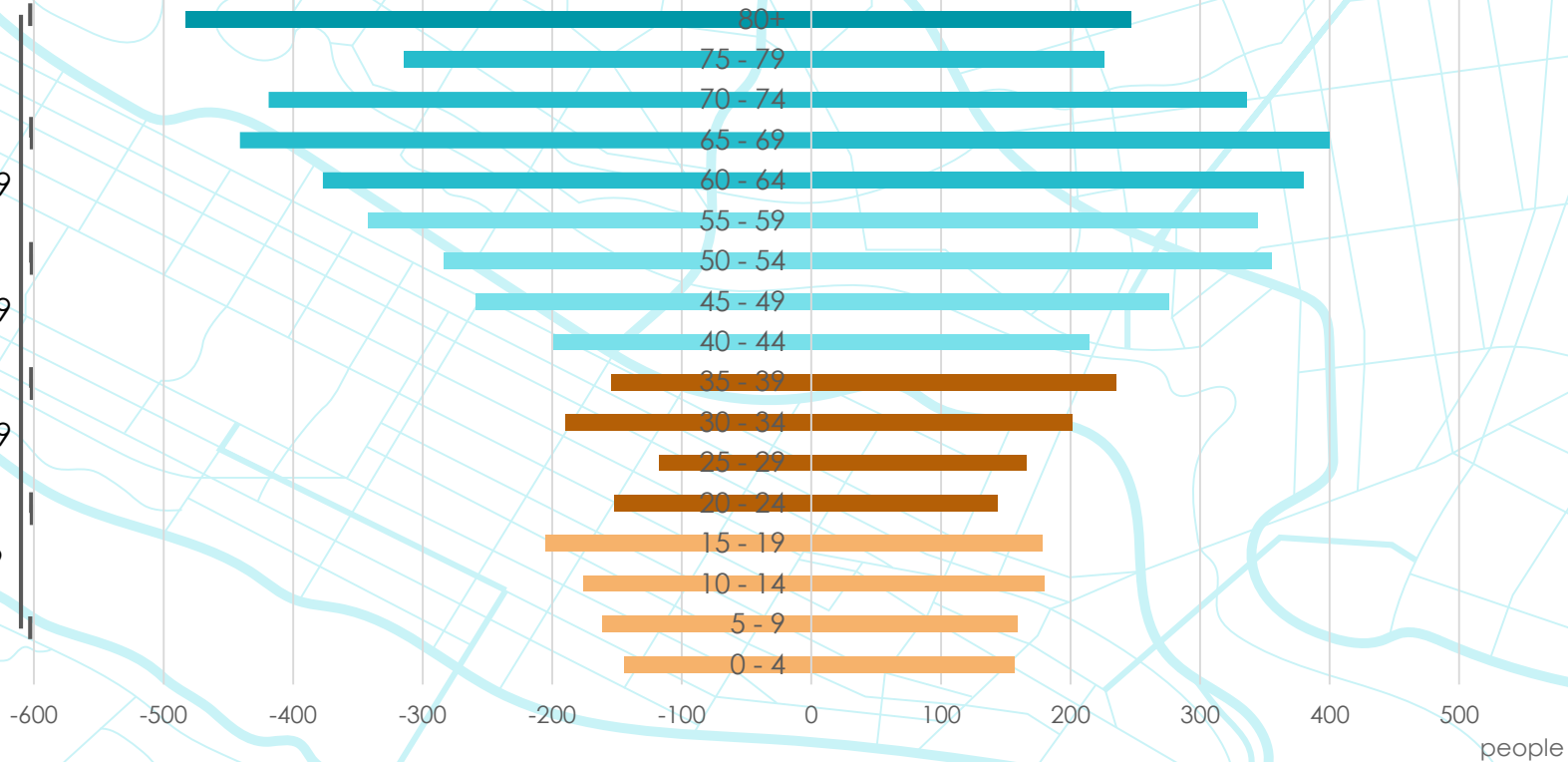
40-59



20-39



0-19



people

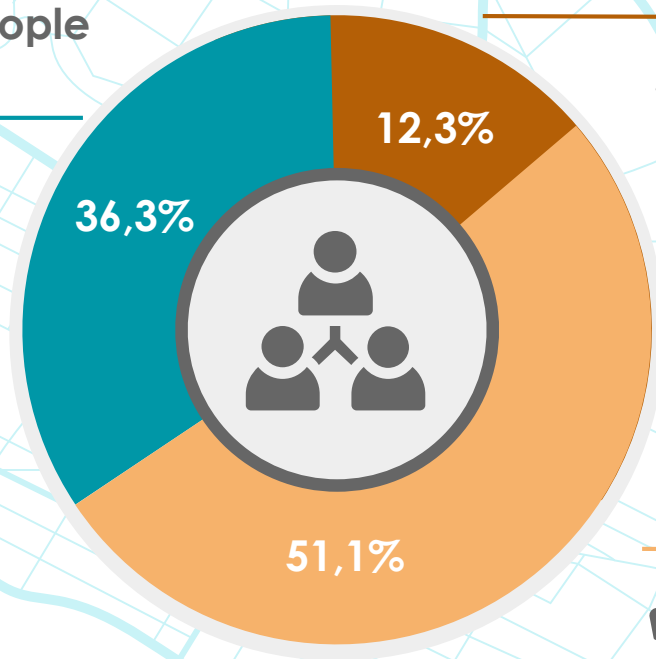


POPULATION UNDER, OF AND OVER WORKING AGE IN TOPOLOVGRAD MUNICIPALITY BY 2022

Over working age: 3 157 people

1 252 men
1 905 women

1 398 people in towns



Under working age : 1 056 people

530 men
526 women

578 people in towns

Of working age : 4 402 people

2 416 men
1 986 women

2 490 people in towns



Natural population change in Topolovgrad Municipality in 2022



Marriages
(number)

32



Divorces
(number)

9



Live births
(number)

62



Deaths
(number)

257



Deceased children
under 1
year of
age
(number)

1



Natural
increase
(number)

- 195



Coefficient of
natural
increase (%)

-22,63

Topolovgrad
Municipality

Average list number of persons employed under a labor or service legal contract in 2021



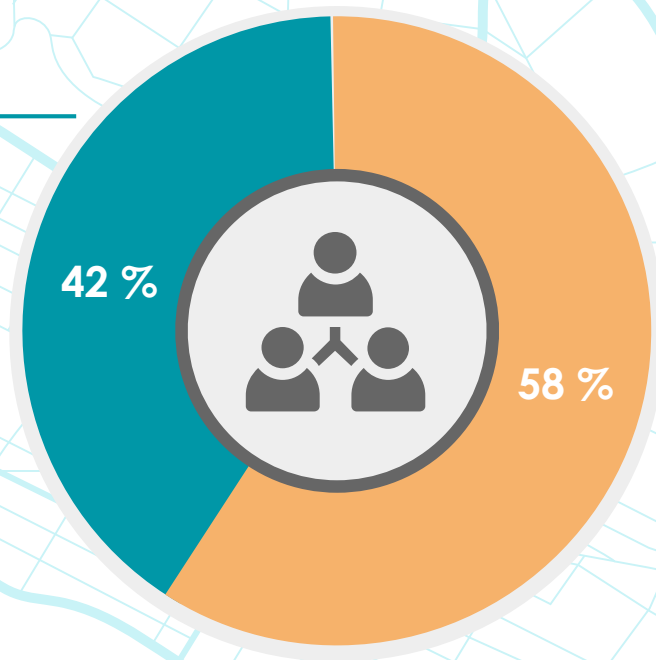
Total	Agriculture, forestry and fisheries	Mining industry	Processing industry	Production and distribution of electric and heat energy and gaseous fuels	Water supply and sewerage services, waste management and recovery	Construction
1 156	179	..	65	12
Commerce; car and motorcycle repair	Transport, storage and post	Hotels and restaurants	Creation and distribution of information and creative products; telecommunications	Financial and insurance activities	Real estate operations	Professional activities and scientific research
198	28	13	-	..	-	..
Administrative and auxiliary activities	State government	Education	Human healthcare and social work	Culture, sport and entertainment	Other activities	
17	..	161	194	11	12	



Average list number of persons employed under a labor or service legal contract in 2021 in the public and private sectors

Public sector

483,
of which with the highest share –
40,9% employed in „Commerce;
car and motorcycle repair“ sector



Private sector

673,
of which with the highest share –
28,4% employed in „Human
healthcare and social work“ sector

Average gross annual salary of employed persons in employment or service legal contract in 2021



Total	Agriculture, forestry and fisheries	Mining industry	Processing industry	Production and distribution of electric and heat energy and gaseous fuels	Water supply and sewerage services, waste management and recovery	Construction
11 984	11 455	..	9 104	9 158
Commerce; car and motorcycle repair	Transport, storage and post	Hotels and restaurants	Creation and distribution of information and creative products; telecommunications	Financial and insurance activities	Real estate operations	Professional activities and scientific research
8 465	7 820	6 495	-	..	-	..
Administrative and auxiliary activities	State government	Education	Human healthcare and social work	Culture, sport and entertainment	Other activities	
4 930	..	23 290	11 646	9 491	11 508	



Highest and lowest annual salary of employed persons under employment or service legal contract in 2021

23 290
BGN

Highest
average gross
annual salary in
Topolovgrad
Municipality
2021

Education

23 290
BGN

Highest average
gross annual
salary in
Topolovgrad
Municipality
2021

Education

11 508
BGN

Highest average
gross annual
salary in the
private sector in
Topolovgrad
Municipality
2021

Other activities

4 930
BGN

Lowest
average gross
annual salary in
Topolovgrad
Municipality
2021

Administrative and auxiliary
activities

Kindergartens in Topolovgrad Municipality in 2022/2023

1

Kindergartens
(number)

223

Places in
kindergartens
(number)

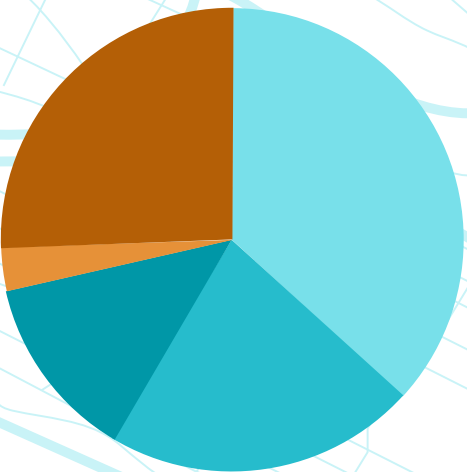
217 / 97,3%

Children in kindergartens in
Topolovgrad municipality
(number / % occupancy)





Education in Topolovgrad Municipality in 2022/2023



31,51% ● I - IV grade 288 (138 men, 150 women)

25,27% ● V - VII grade 231 (118 men, 113 women)

14,33% ● VIII - XII grade 131 (45 men, 86 women)

3,39% ● Vocational high schools and classes for the acquisition of the III degree professional qualification 31 (13 men, 18 women)

25,49% ● Vocational high schools and classes for the acquisition of the II degree professional qualification 233 (115 men, 118 women)

Schools in Topolovgrad Municipality in 2022/2023

General education schools

5

100%



147

graduates of general education schools

42

graduates of secondary education in general education schools

26

graduates of vocational high schools and classes for the acquisition of the III degree professional qualification



Treatment and health facilities in Topolovgrad Municipality

Specialized hospitals

Treatment facilities for hospital care

1
20
легла
бедс



Лечебни
заведения за
извънболнична
помощ

Treatment facilities for outpatient care

0



Medical staff in:

Doctors

Dentists

Health Care
Medical
Specialists

People per
one doctor

People per
one dentist

Topolovgrad Municipality

12

3

17

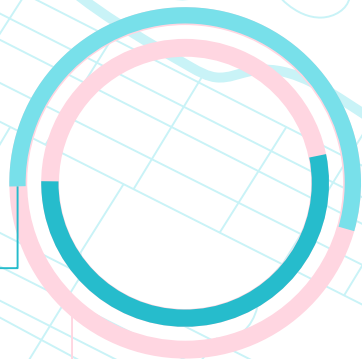
71

2872



Nursery in Topolovgrad Municipality in 2022

Children in nursery



58%

Girls

42%

Boys



Establishments

Places
(capacity)

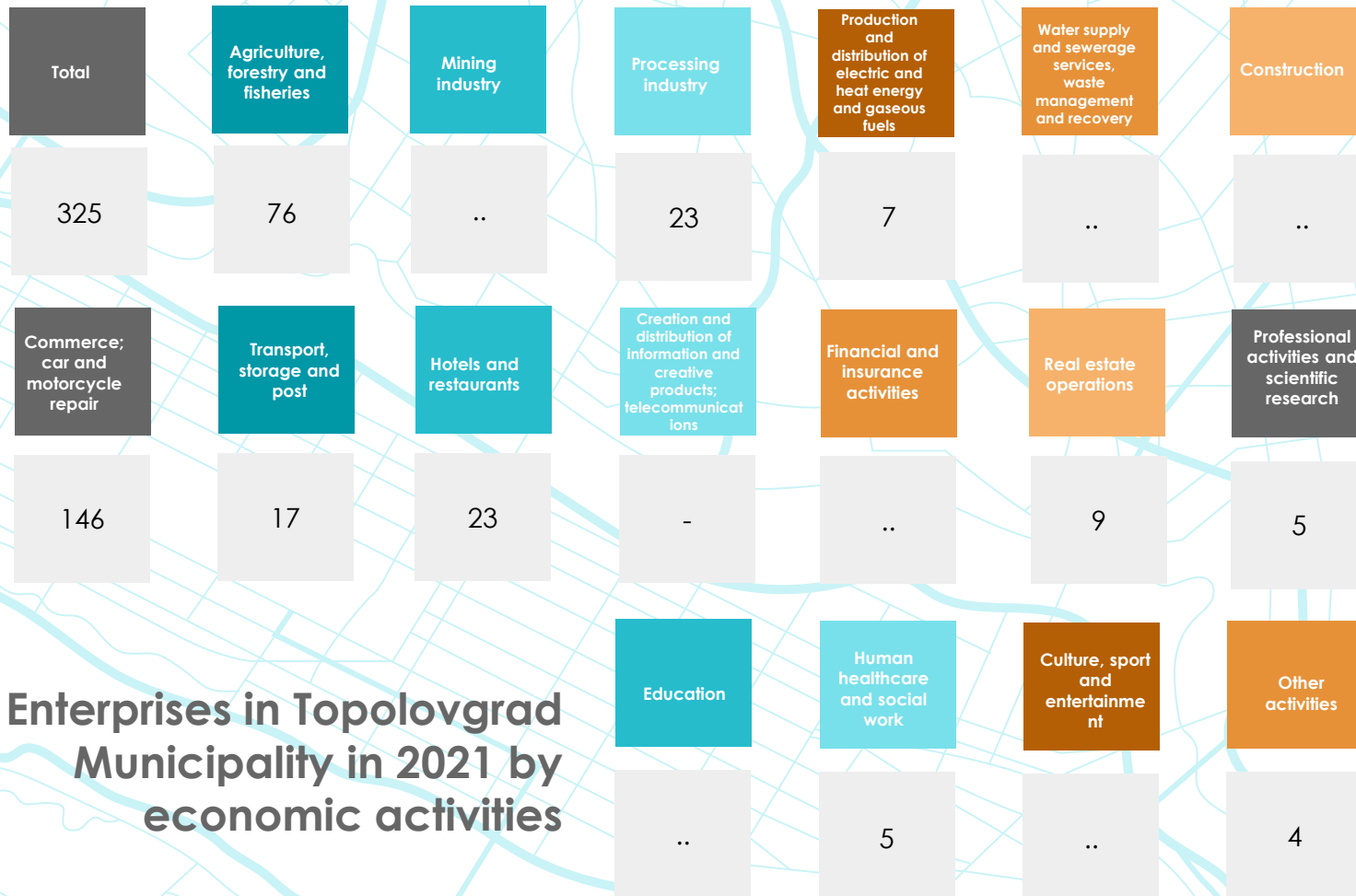
Occupancy

Nursery

1

27

88,9%

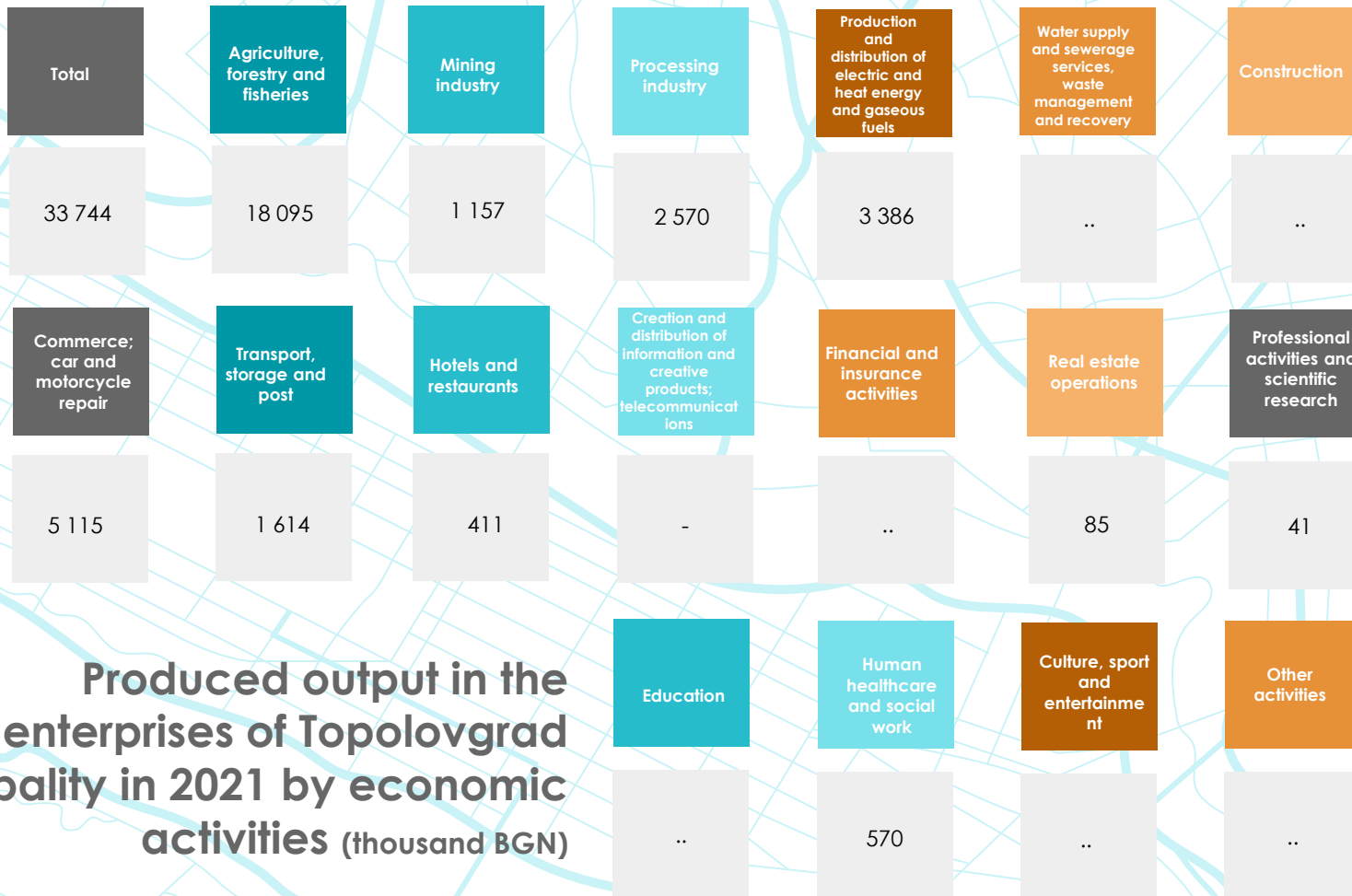



Enterprises in Topolovgrad Municipality in 2021 by economic activities



.. Confidential data

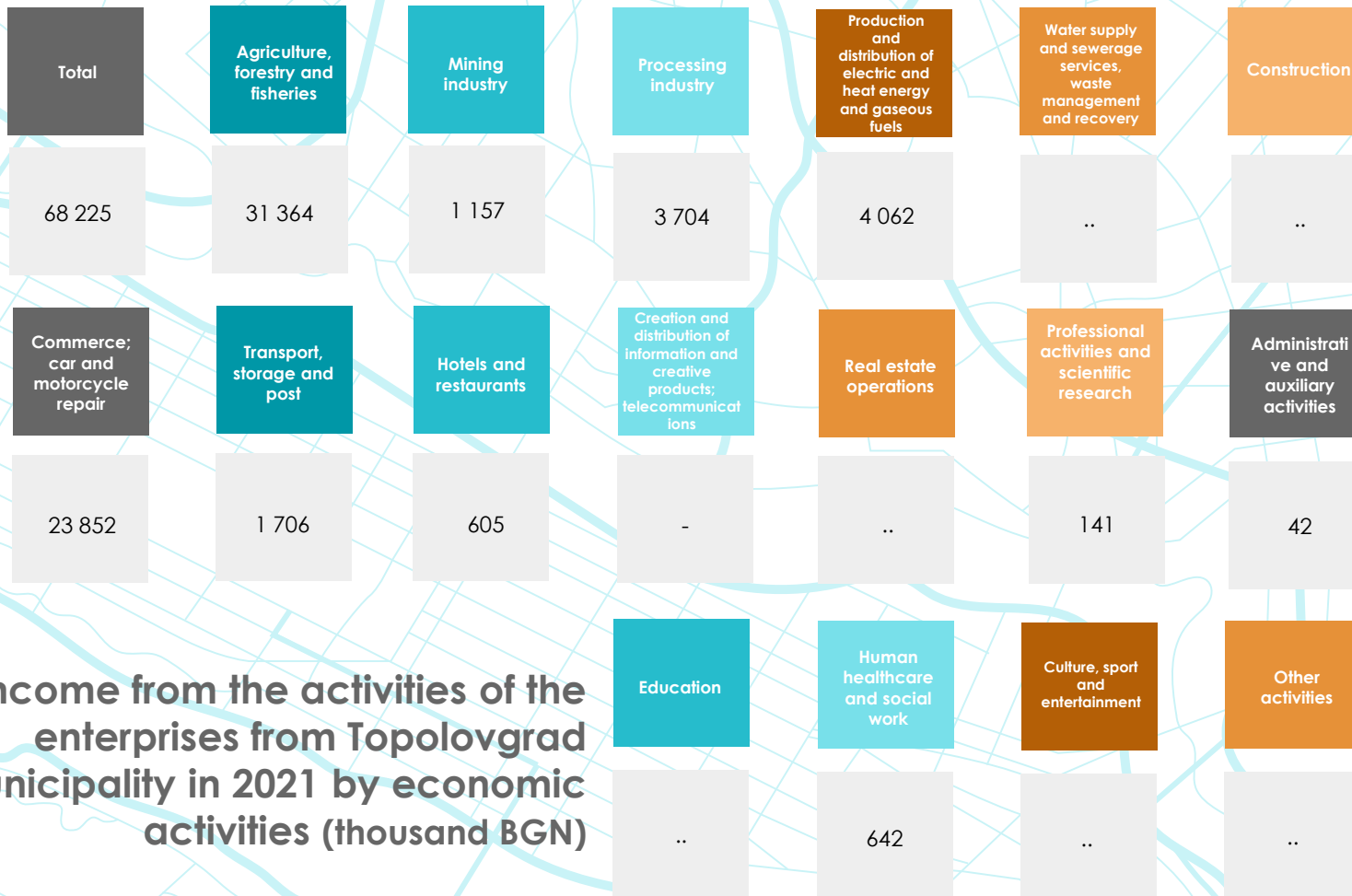
- No data



 **Produced output in the enterprises of Topolovgrad Municipality in 2021 by economic activities (thousand BGN)**

.. Confidential data

.. No data



Income from the activities of the enterprises from Topolovgrad Municipality in 2021 by economic activities (thousand BGN)



.. Confidential data

.. No data

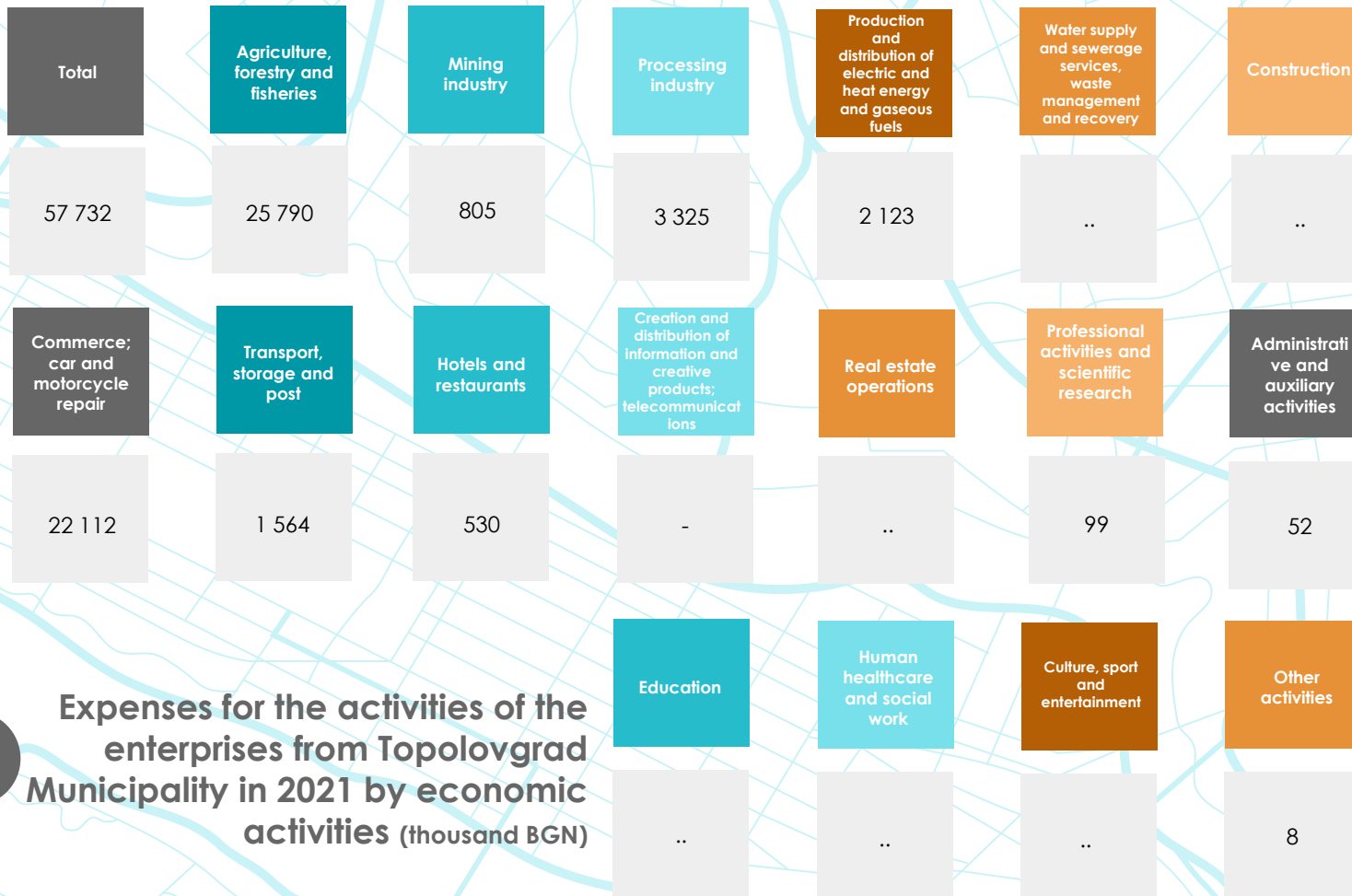


Net revenue from sales of enterprises from Topolovgrad Municipality in 2021 by economic activities (thousand BGN)

Total	Agriculture, forestry and fisheries	Mining industry	Processing industry	Production and distribution of electric energy and heat energy and gaseous fuels	Water supply and sewerage services, waste management and recovery	Construction
52 001	17 318	1 088	3 603	3 400
Commerce; car and motorcycle repair	Transport, storage and post	Hotels and restaurants	Creation and distribution of information and creative products; telecommunications	Real estate operations	Professional activities and scientific research	Administrative and auxiliary activities
22 974	1 595	584	-	..	94	42
			Education	Human healthcare and social work	Culture, sport and entertainment	Other activities
			..	456

.. Confidential data

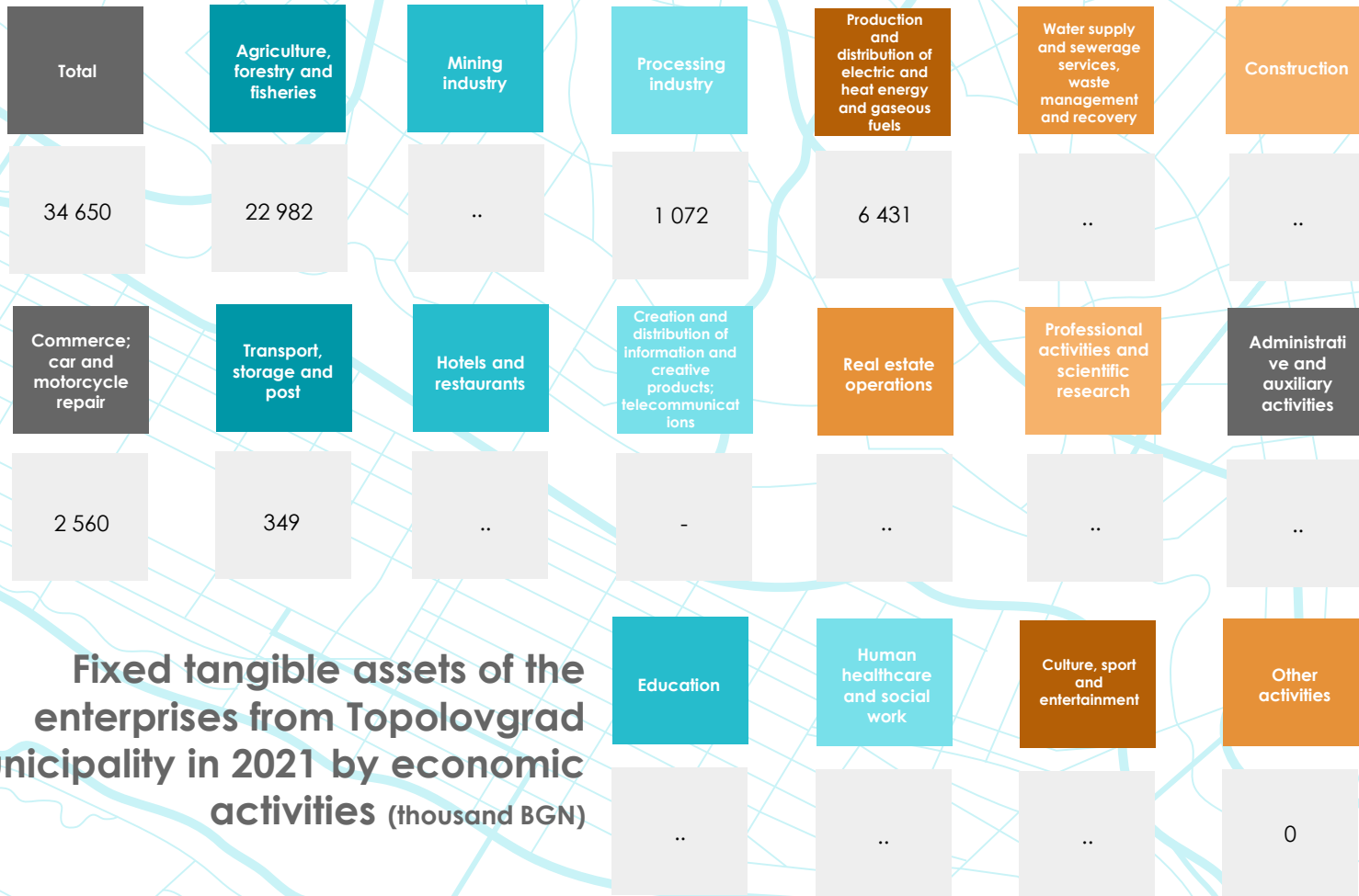
.. No data



Expenses for the activities of the enterprises from Topolovgrad Municipality in 2021 by economic activities (thousand BGN)

.. Confidential data

- No data



Fixed tangible assets of the enterprises from Topolovgrad Municipality in 2021 by economic activities (thousand BGN)



.. Confidential data

.. No data

	Enterprises	Enterprises	Operating income	Net sales revenue	Net sales revenue	Fixed tangible assets
Total	325	33 744 BGN thousand	68 225 BGN thousand	52 001 BGN thousand	57 732 BGN thousand	34 650 BGN thousand
Micro up to 9 employed	314	24 272 BGN thousand	50 573 BGN thousand	38 278 BGN thousand	41 966 BGN thousand	26 316 BGN thousand
Small from 10 to 49 BGN thousand	.. BGN thousand	.. BGN thousand	.. BGN thousand	.. BGN thousand
Medium from 50 to 249 BGN thousand	.. BGN thousand	.. BGN thousand	.. BGN thousand	.. BGN thousand
Large over 250	-	-	-	-	-	-



Main economic indicators of non-financial enterprises for 2021 by groups of enterprises according to the persons employed in them in the Topolovgrad Municipality

.. Confidential data

- No data

Interreg Greece-Bulgaria



GR-BG BUSINESS PASSPORT

European Regional Development Fund

„This document is developed on the Project „Greek Bulgarian Business Partnership by Assistance, Services, Solutions to Promote Open Regions Team” with acronym „GR-BG BUSINESS PASSPORT“, funded by Cooperation Programme Interreg V-A “Greece-Bulgaria 2014-2020”, Subsidy contract № B6.3a.07/13.04.2021. The project is co-funded by the European Regional Development Fund (ERDF) and by national funds of the countries participating in Cooperation Programme Interreg V-A “Greece-Bulgaria 2014-2020”. The contents of this information are sole responsibility of RMA Maritza and can in no way be taken to reflect the views of the European Union, the participating countries the Managing Authority and the Joint Secretariat“

